



**Bata Industrials**

IMPROVING WORKING LIVES

**BATA  
INDUSTRIALS  
IMPROVING  
WORKING  
LIVES**



Collection 2018/2019



# SOLID FOOTSTEPS

For over 100 years, Bata has been living and breathing shoes. As a global leader in our field, we have managed to continuously shape the world of safety footwear.

Innovation, safety and comfort have always been our top priorities. From the moment we set our first footsteps in the field to where we are now.

## Growing together

In 1894, Thomas J. Bata established his first shoe factory in Zlín, Czechoslovakia. In 1934, the location in Best followed. Not only was a high-tech factory built, but a complete Bata village was established. All to provide the Bata workers with everything they needed. With 35,000 people working for Bata in over 70 countries, Bata now is one of the oldest and largest shoe companies in the world.

The core of Bata's success is in the way we look at things. Creating the perfect safety shoe for every situation is a complex challenge, but that's exactly what makes it so interesting. We feel like it's our mission to maintain the highest standards in safety and quality, without giving in on comfort. This dedication that runs like a thread to our company, is what truly makes the difference. We are proud to know that we help millions of people make their way through their working day with the ideal pair of safety shoes for their work.

## Sustainability

Bata Industrials produces much of its professional footwear locally. This does not only give us benefits in terms of logistics, but also makes our environmental footprint smaller. Bata and Bata Industrials have a strong focus on sustainability. We care about the impact we have on our customers, our people and our surroundings. You can find more information about our sustainability programs on [www.bataindustrials.com](http://www.bataindustrials.com), [www.thebatacompany.com](http://www.thebatacompany.com) and [www.batachildrensprogram.org](http://www.batachildrensprogram.org). The Bata Children's Program already has over 7,000 volunteer participants and has had a positive impact on over 250,000 children.

## Family business with global coverage

Bata Industrials sells nine million pairs of professional footwear a year in over 70 countries. Despite its scale, it's still a down-to-earth family business, with safety, health, the protection and comfort of its workers as its priorities.

## Evolving products

Over the years, Bata Best has produced fashion shoes, slippers, car tires, children's shoes and socks. In the 1970's, Bata Best also started manufacturing professional footwear and socks, and is now the global headquarters for Bata Industrials.



5,000

shops are owned by the Bata Shoe Organization



9,000,000

pairs of shoes are sold by Bata Industrials annually



7

Bata Industrials offices around the world



6

factories are owned by Bata Industrials



70+

countries Bata Industrials is selling shoes in



35,000

people work for the Bata Shoe Organization

# CONTENT

Connecting Technology and People	2
The Safety Standard	3
Milestone Achievements	4
Finding the Perfect Match	5
Walkline® Evo Inside	6
Forward Range	8
Nova Range	14
Enduro: ACT Range	20
City	26
Enduro: PWR Range	28
Enduro: XTR Range	31
Traxx Range	32
Helix Range	36
Classics Range	38
Bright Range	42
Bickz Range	44
Boots Range	50
PVC Gumboots	52
Socks Range	54
Inlay Soles	64

# CONNECTING TECHNOLOGY AND PEOPLE

2

At Bata Industrials, we aim for nothing less than the best. Our technology-focused approach, combined with the expertise of the smartest thinkers, is what truly sets Bata Industrials apart. In order to create safety footwear that matches our high quality standards, every detail counts. We therefore use the most advanced technology and cooperate with top scientists. In our own laboratory, we zoom into even the tiniest details. We use first-class natural materials and create the best fit, resulting in optimum comfort and safety.

## EFFICIENT PRODUCTION

Our modern assembly line in the Netherlands enables us to produce our safety shoes in the most efficient ways. Our investments in robotics, advanced technology and research & development really pay off: the production line is one of the most efficient and flexible you will find.

## INTELLIGENT CHIPTECHNOLOGY

By using advanced chiptechnology, developed specifically for Bata Industrials, we can kick-start the production for every type of safety shoe in no time. The chip holds the 'recipe' for the model that has to be created, which allows us to produce even very small batches without slowing down the production process.

## A HUMAN EYE

You can only get the most out of machines and technology when you have the right people around. That's why our people are still the most important factor in producing the best safety shoes. Our workforce consists of true experts in their field. They are experienced, highly skilled and many of them have been with Bata Industrials for decades.

## IT'S IN OUR NATURE

It has always been in our nature to innovate. Making shoes for workers has us continuously thinking about how to make them safer, lighter, faster and more comfortable. Our goal has always been to make the best, most comfortable safety footwear and we are proud to have such a dedicated team.

## PERFECT TEAMWORK

In building our teams, we do not only look for the most motivated and skilled individuals, but we also aim to create synergy among them. Our employees represent a wide range of backgrounds and cultures, yet despite their differences, they work together in a good atmosphere towards the same goal: making the best safety shoes in the world. New models and developments from our research and development team are tested by the most critical users: the team working at the factory. They test every modification in the designs and new types of materials to make sure only the best safety shoes are manufactured.



# THE SAFETY STANDARD

If a shoe carries a CE-label, this indicates the following: the product meets the requirements of European guideline 89/686/EU regarding personal protective equipment. The CE-standard EN ISO 20345 consists of two parts. The basis label means that a product meets a number of basic requirements. If the product also meets certain additional requirements, this is indicated by a symbol on the shoe.

## EXPLANATION OF THE SYMBOLS

- SB Protective footwear for professional use with toecaps designed to give protection against impact when tested at an energy level of 200 joules
- S1 As SB plus antistatic properties, energy absorption of seat region, closed heel and resistance to fuel oil
- S1P As S1 plus anti-penetration midsole
- S2 As S1 plus water resistance and water absorption of upper material
- S3 As S2 plus anti-penetration midsole and cleated outsole
- S4 All-rubber or all-polymer footwear, antistatic properties, energy absorption of seat region, protective toecap, closed heel and resistance to fuel oil
- S5 As S4 plus anti-penetration midsole and cleated outsole

Additional requirements for special applications with specific marks:

- |    |   |      |                           |
|----|---|------|---------------------------|
| P  | Penetration resistance                    | AN   | Ankle protection          |
| C  | Conductive                                | WR   | Water resistant footwear  |
| A  | Antistatic                                | WRU  | Water resistant upper     |
| E  | Energy absorption                         | FRU  | Flame resistant upper     |
| I  | Insulating footwear                       | HRO  | Resistance to hot contact |
| M  | Metatarsal protection 100 J impact energy | SBH  | Hybrid footwear           |
| HI | Insulation against heat                   | ESD  | Electrostatic discharge   |
| CI | Insulation against cold                   | SRA/ | SRB/SRC Slip resistance   |
| CR | Cut resistant footwear                    |      |                           |

**CAREFULLY READ THESE INSTRUCTIONS BEFORE USING THIS PRODUCT:** This footwear is designed to minimize the risk of injury from the specific hazards as identified by the marking on the particular product (see marking codes above). However, always remember that no item of PPE can provide full protection and care must always be taken while carrying out the risk-related activity.

**PERFORMANCE AND LIMITATIONS OF USE** – These products have been tested in accordance with EN ISO 20345:2011 for the types of protection defined on the product by the marking codes explained above. However, always ensure that the footwear is suitable for the intended end use.

**FITTING, SIZING** – To put on and take off shoes or boots, always fully undo the fastening systems. Only wear footwear of a suitable size. Shoes that are either too loose or too tight will restrict movement and will not provide the optimum level of protection. The shoe size is always clearly marked on our shoes.

**COMPATIBILITY** – To optimize protection, in some instances it may be necessary to use this footwear with additional PPE such as protective trousers or over gaiters. In this case, before carrying out the risk related activity, consult your supplier to ensure that all your protective products are compatible and suitable for your application.

**SOCKS & COMFORT** – Wear Bata Industrials socks, change your socks regularly and, in case of perspiration, take alternating hot and cold baths. Use soap sparingly. Change shoes regularly: leather is a natural product and should be allowed to rest.

Check [www.bataindustrials.com](http://www.bataindustrials.com) to contact our shoe advisor or to view all the standards that apply on each of our shoes. Risk analysis is always the responsibility of the prevention advisor. The prevention advisor, in consultation with the hierarchal line, prepares the advice whereby the employer undertakes the necessary actions.

# MILESTONE ACHIEVEMENTS

1894

Thomas Bat'a (pronounced 'Batya') establishes a shoe factory in Zlín, Czechoslovakia.



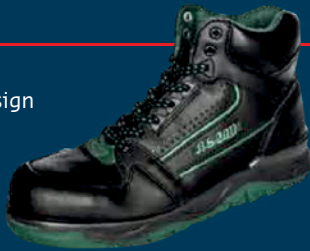
1933



After the success in Czechoslovakia, Bata starts to build factories in other countries, like the Netherlands. Bata builds Batavillage in Holland so that the employees could live near the factory.

1990

BS2000 introduces the first sportive design in the world of safety shoes.



1970

In the late 1970s, Bata in the Netherlands starts to specialize in the production of professional footwear. The first step from consumer to industry as customer base has been taken.

2004

Bata Industrials introduces Bata adapt: a simple step-by-step plan to unburden the employee, employer and medical specialist with multiple options and measurements.



2008



The Bata Industrials laboratory receives the A-status certificate from the SATRA research and technology center. Bata Industrials is the first producer of safety shoes to receive this certification.

2013

Bata Industrials introduces the biomechanical technology Walkline®.



2009

2018

Launch Forward collection.



Bata Industrials starts with the 'lean' production of safety shoes.





# FINDING THE PERFECT MATCH

We know what moves you. We know that people work at their best when they have the right equipment, are well-protected and feel comfortable. Keeping them safer, healthier, active and energized. That's exactly what we're going for.

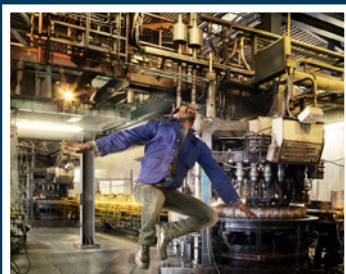
Through our extensive knowledge and broad experience in various working environments, we know exactly what you need, what your circumstances are, what challenges you face and how you move throughout your day.

Bata Industrials has selected 9 main industries to focus on when we develop our shoes. But it doesn't stop there! We know how much jobs in a single area can vary. That's why we created a perfect footwear solution for any job that needs to be done. The perfect match for your needs and wishes. We are more than happy to advise you.

For example, we have developed different sole materials and profiles for any working surface. And no matter what climate or weather condition you work in: we have the right upper available. From waterproof to extremely breathable. Bata Industrials always has the right shoe for the right circumstances.



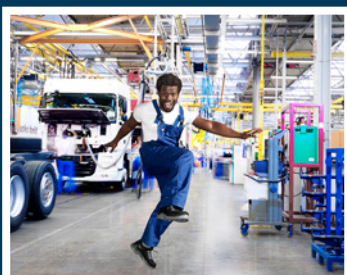
Construction



Heavy industry



Light industry



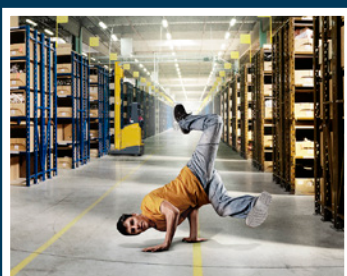
Automotive



Electric



Food industry



Logistics



Petrochemical



Agriculture

# WALKLINE®

## EVO

Keeping you safe, steady and healthy. That's our ultimate goal. As we are continuously shaping the world of safety footwear at Bata Industrials, we are always looking for ways to further improve our shoes. Our Walkline® Evo is an ergonomic system which offers durable comfort, excellent grip and outstanding shock absorption. The natural last provides the perfect fitting for the foot, with the heel lock securing the heel of the foot. Flexlines provide maximum flexibility needed in dynamic work environments and offer a natural support in every step. With Walkline® Evo, your safety shoes will become one with your foot.



### 1 ERGONOMIC

Walkline® Evo is ergonomic and based on applied science. All to maximize productivity of the foot motion by reducing fatigue and creating great comfort! Walkline® Evo guides and supports the foot to make natural movements and to use the momentum of the motion. It helps you to stand and walk in a correct anatomical position.





## 2 DURABLE COMFORT

When you walk all day in your safety shoes, comfort has to be a top priority. Walkline® Evo offers durable comfort, supporting the foot movement in a healthy way. The premium footbed stimulates natural foot movement and provides an extraordinary cushioning effect.

## 3 FLEXLINES

Walkline® Evo incorporates smart flexlines that follow the foot's natural flex zones, offering maximum support, grip and flexibility.



## 4 NATURAL LAST

Walkline® Evo offers perfect fitting by following the shape of the foot. Shoe lasts that are designed in a conventional way often force the foot into an unnatural 'banana' shape, which can create anatomical problems. Walkline® Evo has a straight last, designed to fit the contour of the foot, keeping the foot in a secure position.

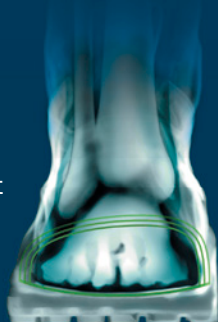
## 5 GRIP

Optimal grip is essential in all work environments. Slipping and falling account for many accidents on the work floor, which is easily avoided by wearing the right safety footwear. Walkline® Evo features anti-slip soles, which provide outstanding grip.



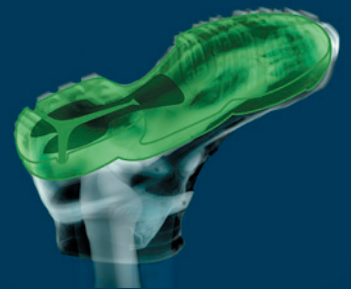
## 6 HEEL LOCK

Our heel lock makes sure the foot stays in the right position, locking it in to support the natural foot motion.



## 7 SHOCK ABSORPTION

Walkline® Evo makes light work of hard surfaces. The Tunnelsystem® helps manage impact, providing energy return and cushioning. Our intelligent combination of midsole, outsole, footbed and in some cases shank can absorb shocks. This technology helps reduce impact to the joints, which reduces injuries and fatigue.







**Bata Industrials®**

IMPROVING WORKING LIVES

# FORWARD RANGE

LET'S MOVE  
FORWARD



# FORWARD RANGE



With our Forward range, you won't even notice you're wearing safety shoes. These very comfortable safety shoes guide the Walkline® of the foot, which reduces fatigue and keeps your energy up. The Forward collection is a double density PU line, which is light and has the best possible grip due to the Flexlines and the brand new Flex Grip. Flex Grip combines flexibility, adaptability and supreme grip, far exceeding the SRC standard. Every Forward model is completely metal free and will not react to metal detectors. Our Forward safety shoes are available in 12 light and durable models.

## ENGINE ESD



- > Full grain leather/abrasion resistant PU toecap
- > FlexGuard® composite midsole
- > Thermoplastic toecap
- > Bata Cool Comfort®-lining
- > Dual density PU-sole
- > Widths W-XW
- > Size range: W 36-49 / XW 38-48
- > UK size range: W 3-14 / XW 5-13 (including 6.5 and 9.5)



**FULL METAL FREE**

## GEAR ESD



- > Full grain leather
- > FlexGuard® composite midsole
- > Thermoplastic toecap
- > Bata Cool Comfort®-lining
- > Dual density PU-sole
- > Widths W-XW
- > Size range: W 36-49 / XW 38-48
- > UK size range: W 3-14 / XW 5-13 (including 6.5 and 9.5)



**FULL METAL FREE**

## GOAL ESD



- > Microfiber upper/abrasion resistant TPU toecap
- > FlexGuard® composite midsole
- > Thermoplastic toecap
- > Bata Cool Comfort®-lining
- > Dual density PU-sole
- > Widths W-XW
- > Size range: W 36-49 / XW 38-48
- > UK size range: W 3-14 / XW 5-13 (including 6.5 and 9.5)



**FULL METAL FREE**



## WHAT OUR CUSTOMERS SAY

CHARLIE KALDENHOFF, PIANOVIUM:

"These Forwards are the most comfortable shoes I've ever worn! They look nice and are very lightweight, it doesn't even feel like I'm wearing safety shoes. It feels like wearing sports shoes, but better: they protect my feet every day at work while doing what I love."

### HELSINKI 3 ESD



- › Microfiber/textile upper
- › FlexGuard® composite midsole
- › Thermoplastic toecap
- › Bata Cool Comfort®-lining
- › Dual density PU-sole
- › Width W
- › Size range: 36-49
- › UK size range: 3-14 (including 6.5 and 9.5)



**FULL METAL FREE**

### LEGEND ESD



- › Mesh upper/abrasion resistant TPU toecap
- › FlexGuard® composite midsole
- › Thermoplastic toecap
- › Boa® closure system
- › Bata Cool Comfort®-lining
- › Dual density PU-sole
- › Widths W-XW
- › Size range: W 36-49 / XW 38-48
- › UK size range: W 3-14 / XW 5-13 (including 6.5 and 9.5)



**BOA**



**DETECTION FRIENDLY**

### RAFT ESD



- › Mesh upper/abrasion resistant TPU toecap
- › FlexGuard® composite midsole
- › Thermoplastic toecap
- › Bata Cool Comfort®-/OutDry® waterproof lining
- › Dual density PU-sole
- › Widths W-XW
- › Size range: W 36-49 / XW 38-48
- › UK size range: W 3-14 / XW 5-13 (including 6.5 and 9.5)



**FULL METAL FREE**





## SCORE ESD



- › Microfiber upper/abrasion resistant TPU toecap
- › FlexGuard® composite midsole
- › Thermoplastic toecap
- › Bata Cool Comfort®-lining
- › Dual density PU-sole
- › Widths W-XW
- › Size range: W 36-49 / XW 38-48
- › UK size range: W 3-14 / XW 5-13 (including 6.5 and 9.5)



**FULL METAL FREE**

## SHIFT ESD



- › Full grain leather
- › FlexGuard® composite midsole
- › Thermoplastic toecap
- › Bata Cool Comfort®-lining
- › Dual density PU-sole
- › Widths W-XW
- › Size range: W 36-49 / XW 38-48
- › UK size range: W 3-14 / XW 5-13 (including 6.5 and 9.5)



**FULL METAL FREE**

## SURF ESD



- › Mesh upper/abrasion resistant TPU toecap
- › FlexGuard® composite midsole
- › Thermoplastic toecap
- › Bata Cool Comfort®-/OutDry® waterproof lining
- › Dual density PU-sole
- › Widths W-XW
- › Size range: W 36-49 / XW 38-48
- › UK size range: W 3-14 / XW 5-13 (including 6.5 and 9.5)



**FULL METAL FREE**



## TURBO ESD



- › Full grain leather/abrasion resistant PU toecap
- › FlexGuard® composite midsole
- › Thermoplastic toecap
- › Bata Cool Comfort®-lining
- › Dual density PU-sole
- › Widths W-XW
- › Size range: W 36-49 / XW 38-48
- › UK size range: W 3-14 / XW 5-13 (including 6.5 and 9.5)



**FULL METAL FREE**

**TURN ESD**

- > Mesh upper/abrasion resistant TPU toecap
- > FlexGuard® composite midsole
- > Thermoplastic toecap
- > Bata Cool Comfort®-lining
- > Dual density PU-sole
- > Widths W-XW
- > Size range: W 36-49 / XW 38-48
- > UK size range: W 3-14 / XW 5-13 (including 6.5 and 9.5)



**FULL  
METAL  
FREE**

**WING ESD**

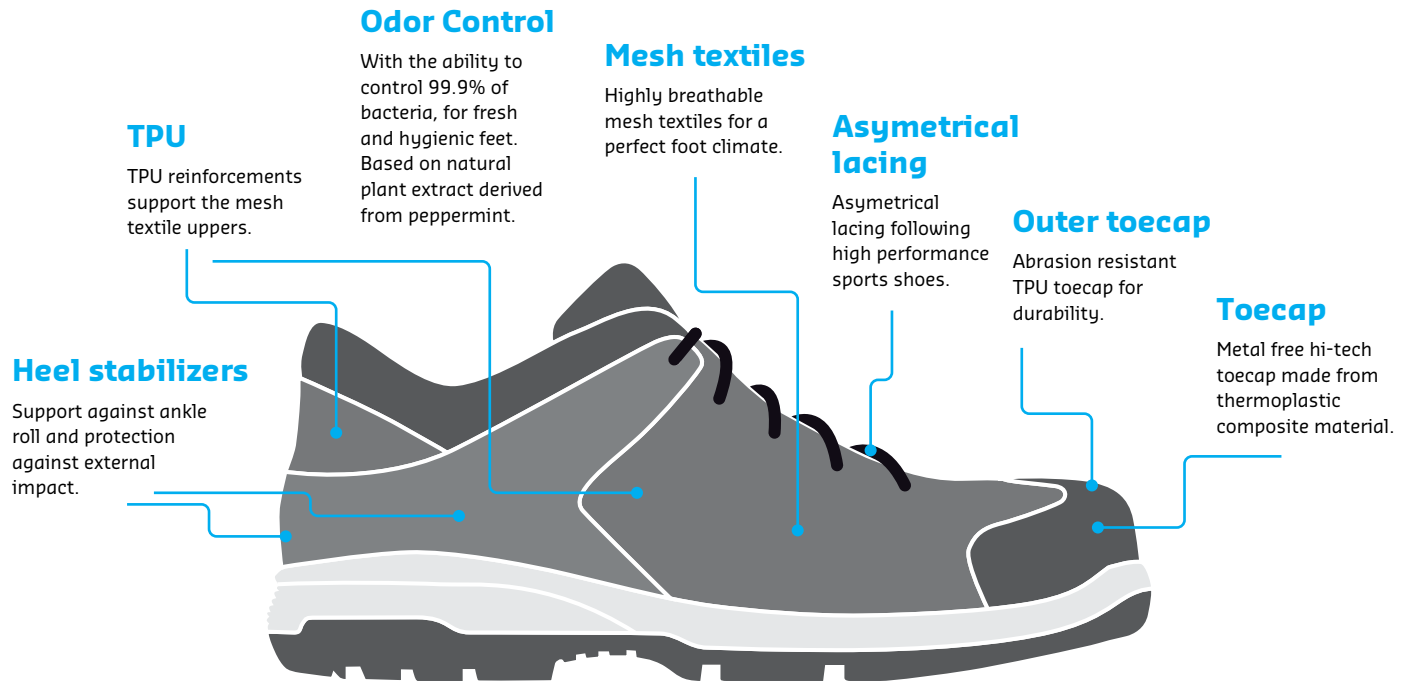
- > Mesh upper/abrasion resistant TPU toecap
- > FlexGuard® composite midsole
- > Thermoplastic toecap
- > Bata Cool Comfort®-lining
- > Dual density PU-sole
- > Widths W-XW
- > Size range: W 36-49 / XW 38-48
- > UK size range: W 3-14 / XW 5-13 (including 6.5 and 9.5)



**FULL  
METAL  
FREE**



# FORWARD TECHNOLOGY







**Bata Industrials**

IMPROVING WORKING LIVES

A construction worker is shown from a side profile, sitting on a metal beam. He is wearing a yellow hard hat, safety glasses, and a beige work jacket over a black long-sleeved shirt. His work pants are beige with black accents and a yellow tape measure is tucked into his belt. He is wearing black safety boots with orange and grey accents. The background shows a construction site with metal pipes and windows.

# NOVA RANGE

THE NEXT  
STEP IN SAFETY



# NOVA RANGE



Increased performance and comfort that keep you energized all-day long. The Nova collection incorporates the Walkline® 2.0 technology to push the boundaries of safety, health and comfort. We have combined high-tech microfiber materials and breathable fabrics with a flexible, dynamic TPU QuattroTech® and Walkline® 2.0 sole to create a shoe that is designed for safety and looks ultra-stylish. Its light, breathable materials make it easy to wear. The result? You'll stay energized throughout the whole day, wherever you work.

## CRYPTO ESD



- › Microfiber upper
- › FlexGuard® composite midsole
- › Steel toecap
- › Bata Cool Comfort®-lining
- › QuattroTech®-sole (TPU)
- › Widths W-XW
- › Size range: W 36-48 / XW 38-48
- › UK size range: W 3-13 / XW 5-13 (including 6.5 and 9.5)



## LOGIK ESD



- › Microfiber upper/abrasion resistant TPU toecap
- › FlexGuard® composite midsole
- › Steel toecap
- › Bata Cool Comfort®-lining
- › QuattroTech®-sole (TPU)
- › Widths W-XW
- › Size range: W 36-48 / XW 38-48
- › UK size range: W 3-13 / XW 5-13 (including 6.5 and 9.5)

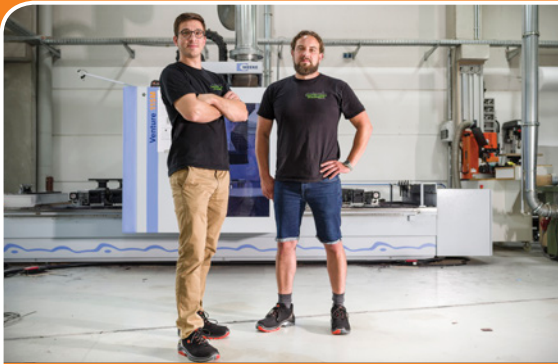


## QUAD ESD



- › Microfiber upper/abrasion resistant PU toecap
- › FlexGuard® composite midsole
- › Steel toecap
- › Bata Cool Comfort®-lining
- › QuattroTech®-sole (TPU)
- › Widths W-XW
- › Size range: W 36-48 / XW 38-48
- › UK size range: W 3-13 / XW 5-13 (including 6.5 and 9.5)





## WHAT OUR CUSTOMERS SAY

TOBIAS HÜCK & DENNIS PRAUSE, TISCHLER TEAM:

“We want our people to be safe and comfortable, but as they are prominent at the worksite of our clients, we want them to look fashionable as well. We are committed to making state of the art furniture, and therefore want to present ourselves also as “state of the art.” That’s why we choose Nova from Bata Industrials.”

### QUBIT ESD



- › Microfiber upper
- › FlexGuard® composite midsole
- › Steel toecap
- › Bata Cool Comfort®-lining
- › QuattroTech®-sole (TPU)
- › Widths W-XW
- › Size range: W 36-48 / XW 38-48
- › UK size range: W 3-13 / XW 5-13 (including 6.5 and 9.5)



### RADAR ESD



- › Full grain leather/abrasion resistant PU toecap
- › Steel midsole
- › Steel toecap
- › Bata Cool Comfort®-lining
- › QuattroTech®-sole (TPU)
- › Widths W-XW
- › Size range: W 36-48 / XW 38-48
- › UK size range: W 3-13 / XW 5-13 (including 6.5 and 9.5)



### SYNC ESD



- › Microfiber upper
- › FlexGuard® composite midsole
- › Steel toecap
- › Bata Cool Comfort®-lining
- › QuattroTech®-sole (TPU)
- › Widths W-XW
- › Size range: W 36-48 / XW 38-48
- › UK size range: W 3-13 / XW 5-13 (including 6.5 and 9.5)





**TRONIC ESD**

- › Full grain leather/abrasion resistant PU toecap
- › FlexGuard® composite midsole
- › Steel toecap
- › Boa® clusre system
- › Bata Cool Comfort®-lining
- › QuattroTech®-sole (TPU)
- › Widths W-XW
- › Size range: W 36-48 / XW 38-48
- › UK size range: W 3-13 / XW 5-13 (including 6.5 and 9.5)

**BOA****VECTOR ESD**

- › Full grain leather/abrasion resistant PU toecap
- › Steel midsole
- › Steel toecap
- › Bata Cool Comfort®-lining
- › QuattroTech®-sole (TPU)
- › Widths W-XW
- › Size range: W 36-48 / XW 38-48
- › UK size range: W 3-13 / XW 5-13 (including 6.5 and 9.5)

**ZIP ESD**

- › Microfiber upper/abrasion resistant TPU toecap
- › FlexGuard® composite midsole
- › Steel toecap
- › Bata Cool Comfort®-lining
- › QuattroTech®-sole (TPU)
- › Widths W-XW
- › Size range: W 36-48 / XW 38-48
- › UK size range: W 3-13 / XW 5-13 (including 6.5 and 9.5)















**Bata Industrials®**  
IMPROVING WORKING LIVES



# ENDURO

## ACT RANGE

## ODOR CONTROL IS THE ANSWER TO THE PROBLEM OF SHOES THAT SMELL BAD

**Odor Control is a total solution that attacks and controls 99.9% of bacteria attracted to sweaty feet.**

### Where does the smell come from?

When feet sweat, they release moisture from the 250,000 sweat glands on each foot. Bacteria are attracted to this moisture, which they consume and then excrete as waste gases with an unpleasant and penetrating odor.

### What is Odor Control?

Bata Industrials has worked together with scientists to develop a solution that not only eliminates odor, but is also completely eco-friendly. Whereas other methods leave a large environmental footprint, Odor Control is free of synthetic chemicals. It is based on a completely natural plant extract,

derived from peppermint. Odor Control has the innate ability to control 99.9% of bacteria and even maintains its effect at temperatures of up to 240°C. This makes your feet feel fresh all day long.

### Tested to the highest standard

Odor Control delivers excellent antimicrobial efficiency in AATCC 100 testing, as conducted by an independent laboratory. Tested and approved according to the strictest standards in the world for antibacterial finishes on textile materials, Odor Control is used not just in the sock liner of safety shoes, but in all areas surrounding the foot.





# ACT RANGE



Comfort is the key word for our Walkline® ACT range!

These shoes include many comfort features and therefore reduce fatigue and keep you energized. Purpose-made for general use, ACT offers lightweight, comfortable and sporty designs.

The white collection encompasses technology and quality materials such as microfiber, which importantly assist in maintaining the right level of hygiene in sectors like the food industry.

## ACT 156 ESD



- › Microfiber upper/abrasion resistant PU toecap
- › FlexGuard® composite midsole
- › Steel toecap
- › Bata Cool Comfort®-lining
- › Dual density PU-sole
- › Widths W-XW
- › Size range: W 35-48 / XW 38-48
- › UK size range: W 2-13 / XW 5-13 (including 6.5 and 9.5)



## ACT 157 ESD



- › Microfiber upper/abrasion resistant PU toecap
- › FlexGuard® composite midsole
- › Steel toecap
- › Bata Cool Comfort®-lining
- › Dual density PU-sole
- › Widths W-XW
- › Size range: W 35-48 / XW 38-48
- › UK size range: W 2-13 / XW 5-13 (including 6.5 and 9.5)



## ACT 158 ESD



- › Microfiber upper/abrasion resistant PU toecap
- › FlexGuard® composite midsole
- › Steel toecap
- › Bata Cool Comfort®-lining
- › Dual density PU-sole
- › Widths W-XW
- › Size range: W 35-48 / XW 38-48
- › UK size range: W 2-13 / XW 5-13 (including 6.5 and 9.5)





**ACT 107 ESD**

- › Nubuck leather
- › Steel toecap
- › Bata Cool Comfort®-lining
- › Dual density PU-sole
- › Widths W-XW-XXW
- › Size range: W 35-49 / XW 38-49 / XXW 40-46
- › UK size range: W 2-14 / XW 5-14 / XXW 6.5-11 (including 6.5 and 9.5)

**ACT 112 ESD**

- › Nubuck leather
- › Steel midsole
- › Steel toecap
- › Bata Cool Comfort®-lining
- › Dual density PU-sole
- › Widths W-XW-XXW
- › Size range: W 35-49 / XW 38-49 / XXW 40-46
- › UK size range: W 2-14 / XW 5-14 / XXW 6.5-11 (including 6.5 and 9.5)

**ACT 113****ACT 116 ESD**

- › Full grain leather
- › Steel midsole (ACT 116 ESD)
- › Steel toecap
- › Bata Cool Comfort®-lining
- › Dual density PU-sole
- › Widths ACT 113: W
- › Widths ACT 116: W-XW-XXW
- › Size range ACT 113: 35-49
- › Size range ACT 116: W 35-49 / XW 38-49 / XXW 40-46
- › UK size range ACT 113: 2-14 (including 6.5 and 9.5)
- › UK size range ACT 116: W 2-14 / XW 5-14 / XXW 6.5-11 (including 6.5 and 9.5)

**ACT 115**

- › Full grain leather/abrasion resistant PU toecap
- › Steel midsole
- › Steel toecap
- › Bata Cool Comfort®-lining
- › Dual density PU-sole
- › Widths W-XW-XXW
- › Size range: W 35-49 / XW 38-49 / XXW 40-46
- › UK size range: W 2-14 / XW 5-14 / XXW 6.5-11 (including 6.5 and 9.5)



## ACT 117

## ACT 120 ESD



- › Full grain leather
- › Steel midsole (ACT 120 ESD)
- › Steel toecap
- › Bata Cool Comfort®-lining
- › Dual density PU-sole
- › Widths ACT 117: W
- › Widths ACT 120: W-XW-XXW
- › Size range ACT 117: 35-49
- › Size range ACT 120: W 35-49 / XW 38-49 / XXW 40-46
- › UK size range ACT 117: 2-14 (including 6.5 and 9.5)
- › UK size range ACT 120: W 2-14 / XW 5-14 / XXW 6.5-11 (including 6.5 and 9.5)



## ACT 119



- › Full grain leather/abrasion resistant PU toecap
- › Steel midsole
- › Steel toecap
- › Bata Cool Comfort®-lining
- › Dual density PU-sole
- › Widths W-XW-XXW
- › Size range: W 35-49 / XW 38-49 / XXW 40-46
- › UK size range: W 2-14 / XW 5-14 / XXW 6.5-11 (including 6.5 and 9.5)



## ACT 124 ESD



- › Nubuck leather/nylon mesh upper
- › Steel toecap
- › Bata Cool Comfort®-lining
- › Dual density PU-sole
- › Widths W-XW-XXW
- › Size range: W 38-49 / XW 38-49 / XXW 40-46
- › UK size range: W 5-14 / XW 5-14 / XXW 6.5-11 (including 6.5 and 9.5)



## ACT 127 ESD



- › Nubuck leather
- › Steel toecap
- › Bata Cool Comfort®-lining
- › Dual density PU-sole
- › Widths W-XW
- › Size range: W 35-49 / XW 38-49
- › UK Size range: W 2-14 / XW 5-14 (including 6.5 and 9.5)





**ACT 128 ESD**

- › Nubuck leather
- › Steel toecap
- › Bata Cool Comfort®-lining
- › Dual density PU-sole
- › Widths W-XW
- › Size range: W 35-49 / XW 38-49
- › UK size range: W 2-14 / XW 5-14 (including 6.5 and 9.5)

**ACT 141 ESD**

- › Nubuck leather/abrasion resistant PU toecap
- › Steel midsole
- › Steel toecap
- › Bata Cool Comfort®-lining
- › Dual density PU-sole
- › Widths W-XW-XXW
- › Size range: W 35-49 / XW 38-49 / XXW 40-46
- › UK size range: W 2-14 / XW 5-14 / XXW 6.5-11 (including 6.5 and 9.5)

**ACT 142 ESD**

- › Nubuck leather/abrasion resistant PU toecap
- › Steel midsole
- › Steel toecap
- › Bata Cool Comfort®-lining
- › Dual density PU-sole
- › Widths W-XW-XXW
- › Size range: W 35-49 / XW 38-49 / XXW 40-46
- › UK size range: W 2-14 / XW 5-14 / XXW 6.5-11 (including 6.5 and 9.5)

**ACT 143 ESD**

- › Nubuck leather/nylon mesh upper
- › Steel toecap
- › Bata Cool Comfort®-lining
- › Dual density PU-sole
- › Width W
- › Size range: 35-49
- › UK size range: 2-14 (including 6.5 and 9.5)



## ACT 144 ESD



- › Full grain leather
- › FlexGuard® composite midsole
- › Steel toecap
- › Leather lining
- › Dual density PU-sole
- › Widths W-XW
- › Size range: W 37-49 / XW 38-49
- › UK size range: W 4-14 / XW 5-14 (including 6.5 and 9.5)



## ACT 151



- › Microfiber upper/abrasion resistant PU toecap
- › FlexGuard® composite midsole
- › Steel toecap
- › Velcro closure
- › Bata Cool Comfort®-lining
- › Dual density PU-sole
- › Width W
- › Size range: 35-49
- › UK size range: 2-14 (including 6.5 and 9.5)



## ACT 152 ESD



- › Microfiber upper/abrasion resistant PU toecap
- › FlexGuard® composite midsole
- › Steel toecap
- › Bata Cool Comfort®-lining
- › Dual density PU-sole
- › Width W
- › Size range: 35-49
- › UK size range: 2-14 (including 6.5 and 9.5)



## ACT 153 ESD



- › Microfiber upper/abrasion resistant PU toecap
- › FlexGuard® composite midsole
- › Steel toecap
- › Bata Cool Comfort®-lining
- › Dual density PU-sole
- › Width W
- › Size range: 35-49
- › UK size range: 2-14 (including 6.5 and 9.5)





# CITY

Lightweight and very comfortable safety shoes. Curve has an EVA midsole, which provides maximum cushioning. Its rubber outsole provides great grip and traction.

## CURVE



- › Microfiber/mesh upper/abrasion resistant rubber toecap
- › FlexGuard® composite midsole
- › Composite toecap
- › Nylon mesh-lining
- › EVA/EVA sole
- › Width W
- › Size range: 34-42
- › UK size range: 1-8 (including 6.5)











**Bata Industrials®**

IMPROVING WORKING LIVES



# ENDURO

PWR RANGE



# PWR RANGE



Sometimes you simply need more. That's where our PWR range comes in. Heavy working conditions ask for solid shoes that provide optimum grip. The PWR range is designed to perfectly deal with rough ground such as gritty, concrete, and muddy surfaces. The rubber outsole has a wider and deeper profile and is resistant to heat up to 300°C. Although it's designed to be tough, the PWR range is ergonomically designed to reduce fatigue and keep you energized all day.

## PWR 307

## PWR 308



- › Full grain leather
- › Steel midsole (PWR 308)
- › Steel toecap
- › Bata Cool Comfort®-lining
- › TriTech Plus®-sole
- › Widths X-XW-XXW
- › Size range: W 38-48 / XW 38-48 / XXW 40-46
- › UK size range: W 5-13 / XW 5-13 / XXW 6.5-11 (including 6.5 and 9.5)



## PWR 309



- › Full grain leather/abrasion resistant PU toecap
- › Steel midsole
- › Steel toecap
- › Bata Cool Comfort®-lining
- › TriTech Plus®-sole
- › Widths X-XW-XXW
- › Size range: W 38-48 / XW 38-48 / XXW 40-46
- › UK size range: W 5-13 / XW 5-13 / XXW 6.5-11 (including 6.5 and 9.5)



## PWR 310

## PWR 311



- › Full grain leather
- › Steel midsole (PWR 311)
- › Steel toecap
- › Bata Cool Comfort®-lining
- › TriTech Plus®-sole
- › Widths X-XW-XXW
- › Size range: W 38-48 / XW 38-48 / XXW 40-46
- › UK size range: W 5-13 / XW 5-13 / XXW 6.5-11 (including 6.5 and 9.5)





## PWR 312



- › Full grain leather/abrasion resistant PU toecap
- › Steel midsole
- › Steel toecap
- › Bata Cool Comfort®-lining
- › TriTech Plus®-sole
- › Widths W-XW-XXW
- › Size range: W 38-48 / XW 38-48 / XXW 40-46
- › UK size range: W 5-13 / XW 5-13 / XXW 6.5-11 (including 6.5 and 9.5)



## PWR 318 O



- › Nubuck leather/nylon textile/abrasion resistant PU toecap
- › Steel midsole
- › Steel toecap
- › Bata Cool Comfort®-/OutDry® waterproof lining
- › TriTech Plus®-sole
- › Widths W-XW
- › Size range: 38-48
- › UK size range: 5-13 (including 6.5 and 9.5)



## PWR 319 O



- › Full grain leather/abrasion resistant PU toecap
- › Steel midsole
- › Steel toecap
- › Bata Cool Comfort®-/OutDry® waterproof lining
- › TriTech Plus®-sole
- › Widths W-XW
- › Size range: 38-48
- › UK size range: 5-13 (including 6.5 and 9.5)



## PWR 328



- › Full grain leather/abrasion resistant PU toecap
- › Steel midsole
- › Steel toecap
- › Leather lining
- › TriTech Plus®-sole
- › Widths W-XW
- › Size range: 38-48
- › UK size range: 5-13 (including 6.5 and 9.5)
- › EN20349:2010 (Welding)



## XTR902



- › Full grain leather
- › Steel midsole
- › Steel toecap
- › Bata Cool Comfort®-lining
- › GripTech®-sole
- › Width W
- › Size range: 38-48
- › UK size range: 5-13  
(including 6.5 and 9.5)



## XTR904



- › Full grain leather/abrasion resistant PU toecap
- › Steel midsole
- › Steel toecap
- › Bata Cool Comfort®-lining
- › GripTech®-sole
- › Width W
- › Size range: 38-48
- › UK size range: 5-13  
(including 6.5 and 9.5)







**Bata Industrials®**

IMPROVING WORKING LIVES

A person wearing Bata Traxx work boots in a workshop setting. The person is wearing dark brown trousers and light-colored work pants. The boots are black with a rugged sole and a protective toe cap. The background shows a workshop with metal shelving and a window. A yellow measuring tape is visible on a workbench in the background. A blue toolbox is in the foreground, and a pressure gauge is in the bottom right corner.

# TRAXX RANGE

KEEPING YOU  
ON THE  
RIGHT TRACK



# TRAXX RANGE

Looking for high comfort and solid grip?

Our Traxx range features the TPU QuattroTech® outsole, which is highly flexible, cushioned and shock absorbing. Excellent grip and stability are therefore guaranteed.

Traxx safety shoes have a perfect fit and offer enhanced comfort.

## TRAXX 23



- › Nubuck leather/nylon mesh/3M Scotchlite™ reflective material
- › Steel midsole
- › Steel toecap
- › Bata VentAir®-lining
- › QuattroTech®-sole
- › Width W
- › Size range: 36-48
- › UK size range: 3-13 (including 6.5 and 9.5)



## TRAXX 24



- › Nubuck leather/nylon mesh/3M Scotchlite™ reflective material
- › Steel midsole
- › Steel toecap
- › Bata VentAir®-lining
- › QuattroTech®-sole
- › Width W
- › Size range: 36-48
- › UK size range: 3-13 (including 6.5 and 9.5)



## TRAXX 91



- › Nubuck leather
- › Steel toecap
- › Bata VentAir®-lining
- › QuattroTech®-sole
- › Width W
- › Size range: 36-48
- › UK size range: 3-13 (including 6.5 and 9.5)





**TRAXX 92**

- › Nubuck leather
- › Steel toecap
- › Bata VentAir®-lining
- › QuattroTech®-sole
- › Width W
- › Size range: 36-48
- › UK size range: 3-13  
(including 6.5 and 9.5)

**TRAXX 95**

- › Nubuck leather
- › Steel midsole
- › Steel toecap
- › Bata VentAir®-lining
- › QuattroTech®-sole
- › Width W
- › Size range: 39-48
- › UK size range: 6-13  
(including 6.5 and 9.5)

**TRAXX 203**

- › Nubuck leather/abrasion resistant TPU toecap
- › Steel midsole
- › Steel toecap
- › Bata Cool Comfort®-lining
- › QuattroTech®-sole
- › Width W
- › Size range: 36-48
- › UK size range: 3-13  
(including 6.5 and 9.5)

**TRAXX 204**

- › Nubuck leather/abrasion resistant TPU toecap
- › Steel midsole
- › Steel toecap
- › Bata Cool Comfort®-lining
- › QuattroTech®-sole
- › Width W
- › Size range: 36-48
- › UK size range: 3-13  
(including 6.5 and 9.5)



## TRAXX 213



- › Nubuck leather/nylon mesh/abrasion resistant TPU toecap
- › FlexGuard® composite midsole
- › Steel toecap
- › Boa® closure system
- › Bata Cool Comfort®-lining
- › QuattroTech®-sole
- › Width W
- › Size range: 36-48
- › UK size range: 3-13 (including 6.5 and 9.5)



BOA

## TRAXX 218



- › Full grain leather/abrasion resistant TPU toecap
- › FlexGuard® composite midsole
- › Steel toecap
- › Boa® closure system
- › Bata Cool Comfort®-lining
- › QuattroTech®-sole
- › Width W
- › Size range: 36-48
- › UK size range: 3-13 (including 6.5 and 9.5)



BOA

## TRAXX 219



- › Full grain leather/abrasion resistant TPU toecap
- › FlexGuard® composite midsole
- › Steel toecap
- › Boa® closure system
- › Bata Cool Comfort®-lining
- › QuattroTech®-sole
- › Width W
- › Size range: 36-48
- › UK size range: 3-13 (including 6.5 and 9.5)



BOA





**Bata Industrials®**

IMPROVING WORKING LIVES



# HELIX RANGE

BRINGING SHOCK  
ABSORPTION  
TO A NEW LEVEL

Helix safety work boots have it all. They are lightweight, durable, stylish and provide the highest standard of comfort in the toughest of working conditions. They feature an advanced cushioning system for the best possible shock absorption. The Helix range achieves the best possible suspension to maximize the reduction of fatigue and stress on the feet and joints.



**LONGREACH BLACK BOA**

- › Full grain leather/abrasion resistant TPU toecap
- › FlexGuard® composite midsole
- › Composite toecap
- › Boa® closure system
- › Bata Cool Comfort®-lining
- › Rubber sole
- › Width XW
- › Size range: 38-48
- › UK size range: 5-13  
(including 6.5 and 9.5)

**BOA****DETECTION FRIENDLY****LONGREACH BLACK ZIP**

- › Full grain leather/abrasion resistant TPU toecap
- › FlexGuard® composite midsole
- › Composite toecap
- › Zipper
- › Bata Cool Comfort®-lining
- › Rubber sole
- › Width XW
- › Size range: 38-48
- › UK size range: 5-13  
(including 6.5 and 9.5)

**FULL METAL FREE****LONGREACH WHEAT ZIP**

- › Nubuck leather/abrasion resistant TPU toecap
- › FlexGuard® composite midsole
- › Composite toecap
- › Zipper
- › Bata Cool Comfort®-lining
- › Rubber sole
- › Width XW
- › Size range: 38-48
- › UK size range: 5-13  
(including 6.5 and 9.5)

**FULL METAL FREE****RANGER WHEAT BOA**

- › Nubuck leather/abrasion resistant TPU toecap
- › FlexGuard® composite midsole
- › Steel toecap
- › Boa® closure system
- › Bata Cool Comfort®-lining
- › Rubber sole
- › Width XW
- › Size range: 38-48
- › UK size range: 5-13  
(including 6.5 and 9.5)

**BOA**





**Bata Industrials®**  
IMPROVING WORKING LIVES

# CLASSICS RANGE

PROVEN  
QUALITY





# CLASSICS RANGE

These are the classics of Bata Industrials.  
Shoes that we're proud of. They have built a solid reputation and still prove their quality year after year.

## SAXA ESD



- › Nubuck leather/nylon mesh
- › Steel toecap
- › Bata Cool Comfort®-lining
- › Dual density PU-sole
- › Widths W-XW
- › Mondopoint size range: 232-315
- › Size range: 37-48
- › UK size range: 4-13  
(including 6.5 and 9.5)



## TIGUA ESD



- › Nubuck leather
- › Steel toecap
- › Bata Cool Comfort®-lining
- › Dual density PU-sole
- › Widths W-XW
- › Mondopoint size range: 232-315
- › Size range: 37-48
- › UK size range: 4-13  
(including 6.5 and 9.5)



## STOCKHOLM



- › Leather/abrasion resistant PU toecap
- › Steel midsole
- › Steel toecap
- › Mesh lining
- › Dual density PU-sole
- › Width XW
- › Size range: 37-48
- › UK size range: 4-13  
(including 6.5 and 9.5)





**NORFOLK**

- > Leather
- > Steel midsole
- > Steel toecap
- > Mesh lining
- > Dual density PU-sole
- > Width XW
- > Size range: 35-48
- > UK size range: 2-13
- > (including 6.5 and 9.5)

**BROOKLYN ESD****STANFORD ESD**

- > Full grain leather
- > FlexGuard® composite midsole (Stanford ESD)
- > Composite toecap
- > Leather lining
- > Dual density PU-sole
- > Width W
- > Size range: 40-48
- > UK size range: 6.5-13
- > (including 9.5)

**RIGA**

- > Suede
- > Steel toecap
- > Velcro closure
- > Mesh lining
- > Dual density PU-sole
- > Width XW
- > Size range: 35-48
- > UK size range: 2-13
- > (including 6.5 and 9.5)









**Bata Industrials®**

IMPROVING WORKING LIVES

# BRIGHT RANGE

## TOUGH AND TRENDY

Safe doesn't have to mean boring!  
The Bright collection is the absolute proof that safety shoes can be as stylish as you want them to be. This colorful range of shoes are made of lightweight fabrics and have a robust Vibram® outsole to put a real spring in your step.



**BRIGHT 020**

- › Microfiber/mesh upper
- › FlexGuard® composite midsole
- › Composite toecap
- › Nylon mesh-lining
- › Rubber sole
- › Width W
- › Size range: 35-47
- › UK size range: 2-12  
(including 6.5 and 9.5)



**FULL  
METAL  
FREE**

**BRIGHT 021**

- › Microfiber/mesh upper
- › FlexGuard® composite midsole
- › Composite toecap
- › Nylon mesh-lining
- › Rubber sole
- › Width W
- › Size range: 35-47
- › UK size range: 2-12  
(including 6.5 and 9.5)



**FULL  
METAL  
FREE**

**BRIGHT 031**

- › Microfiber/mesh upper
- › FlexGuard® composite midsole
- › Composite toecap
- › Nylon mesh-lining
- › Rubber sole
- › Width W
- › Size range: 34-47
- › UK size range: 1-12  
(including 6.5 and 9.5)



**FULL  
METAL  
FREE**

**BRIGHT 041**

- › Microfiber/mesh upper
- › FlexGuard® composite midsole
- › Composite toecap
- › Boa® closure system
- › Nylon mesh-lining
- › Rubber sole
- › Width W
- › Size range: 34-47
- › UK size range: 1-12  
(including 6.5 and 9.5)



**BOA**

**DETECTION  
FRIENDLY**





**Bata Industrials**

IMPROVING WORKING LIVES



**BICKZ RANGE**  
SAFETY MEETS  
DESIGN



# BICKZ RANGE

Sneakers, cool boots or safety shoes? With Bickz there's no need to choose! They are the perfect combination of safety and design. The Bickz collection includes safety sneakers, sportive safety shoes and strong safety footwear for tough environments. The latest additions to the Bickz collection are the Bickz Cross models. Two stylish additions that offer optimum quality and durability at a competitive price. The Bickz Cross models are available in S3 specification and have SRC certified outsoles. The dual density PU/rubber sole combination ensures comfort and performance, even in tough working conditions.

## ACTIVE



- > Full grain leather/abrasion resistant PU toecap
- > Steel midsole
- > Steel toecap
- > Bickz Cool System®-lining
- > Rubber sole
- > Width W
- > Size range: 38-48
- > UK size range: 5-13  
(including 6.5 and 9.5)



**BICKZ  
CROSS**

## RUGGED



- > Full grain leather/abrasion resistant PU toecap
- > Steel midsole
- > Steel toecap
- > Bickz Cool System®-lining
- > Rubber sole
- > Width W
- > Size range: 38-48
- > UK size range: 5-13  
(including 6.5 and 9.5)



**BICKZ  
CROSS**

## BICKZ 201



- > Nubuck leather/abrasion resistant rubber toecap
- > FlexGuard® composite midsole
- > Composite toecap
- > Bickz Cool System®-lining
- > Rubber sole
- > Width W
- > Size range: 38-48
- > UK size range: 5-13  
(including 6.5 and 9.5)





**BICKZ 202**

- › Nubuck leather/abrasion resistant rubber toecap
- › FlexGuard® composite midsole
- › Composite toecap
- › Bickz Cool System®-lining
- › Rubber sole
- › Width W
- › Size range: 38-48
- › UK size range: 5-13  
(including 6.5 and 9.5)

**BICKZ 203**

- › Full grain leather/abrasion resistant rubber toecap
- › FlexGuard® composite midsole
- › Composite toecap
- › Bickz Cool System®-lining
- › Rubber sole
- › Width W
- › Size range: 38-48
- › UK size range: 5-13  
(including 6.5 and 9.5)

**BICKZ 204**

- › Full grain leather/abrasion resistant rubber toecap
- › FlexGuard® composite midsole
- › Composite toecap
- › Bickz Cool System®-lining
- › Rubber sole
- › Width W
- › Size range: 38-48
- › UK size range: 5-13  
(including 6.5 and 9.5)

**BICKZ 305**

- › Full grain leather/abrasion resistant rubber toecap
- › FlexGuard® composite midsole
- › Composite toecap
- › Boa® closure system
- › Bickz Cool System®-lining
- › Rubber sole
- › Width W
- › Size range: 38-48
- › UK size range: 5-13  
(including 6.5 and 9.5)

**BOA**

## BICKZ 728 ESD



- › Nubuck leather/abrasion resistant rubber toecap
- › FlexGuard® composite midsole
- › Composite toecap
- › Bickz Cool System®-lining
- › Rubber sole
- › Width W
- › Size range: 36-48
- › UK size range: 3-13 (including 6.5 and 9.5)



**FULL  
METAL  
FREE**

## BICKZ 731 ESD



- › Nubuck leather/abrasion resistant rubber toecap
- › FlexGuard® composite midsole
- › Composite toecap
- › Bickz Cool System®-lining
- › Rubber sole
- › Width W
- › Size range: 36-48
- › UK size range: 3-13 (including 6.5 and 9.5)



**FULL  
METAL  
FREE**

## BICKZ 732 ESD



- › Leather/abrasion resistant rubber toecap
- › FlexGuard® composite midsole
- › Composite toecap
- › Bickz Cool System®-lining
- › Rubber sole
- › Width W
- › Size range: 36-48
- › UK size range: 3-13 (including 6.5 and 9.5)



**FULL  
METAL  
FREE**

## BICKZ 733 ESD



- › Nubuck leather/abrasion resistant rubber toecap
- › FlexGuard® composite midsole
- › Composite toecap
- › Bickz Cool System®-lining
- › Rubber sole
- › Width W
- › Size range: 36-48
- › UK size range: 3-13 (including 6.5 and 9.5)



**FULL  
METAL  
FREE**



**BICKZ 734 ESD**

- › Nubuck leather
- › FlexGuard® composite midsole
- › Composite toecap
- › Bickz Cool System®-lining
- › Rubber sole
- › Width W
- › Size range: 36-48
- › UK size range: 3-13  
(including 6.5 and 9.5)



**FULL  
METAL  
FREE**

**BICKZ 736 ESD**

- › Nubuck leather
- › FlexGuard® composite midsole
- › Composite toecap
- › Bickz Cool System®-lining
- › Rubber sole
- › Width W
- › Size range: 36-48
- › UK size range: 3-13  
(including 6.5 and 9.5)



**FULL  
METAL  
FREE**

**BICKZ 907**

- › Full grain leather/abrasion resistant rubber toecap
- › FlexGuard® composite midsole
- › Composite toecap
- › YKK zipper
- › Bickz Cool System®-lining
- › Rubber sole
- › Width W
- › Size range: 38-48
- › UK size range: 5-13  
(including 6.5 and 9.5)



**FULL  
METAL  
FREE**









**Bata Industrials®**

IMPROVING WORKING LIVES



# BOOTS RANGE

THE BEST BOOTS  
FOR THE JOB



# BOOTS RANGE

Boots that are ready for all circumstances.

Our Enduro Boots have been developed to deal with even the toughest demands and to meet the highest level of performance. They combine outstanding comfort for the longest working days with premium protection. The rubber nitrile outsoles are heat, oil and acid resistant.

## GOLIATH



- › Full grain leather/abrasion resistant rubber toecap
- › Steel midsole
- › Steel toecap
- › Pull-up straps
- › Fur lining
- › Rubber sole
- › Width XW
- › Size range: 39-49
- › UK size range: 6-14  
(including 6.5 and 9.5)



## POTENT



- › Full grain leather/abrasion resistant rubber toecap
- › Steel midsole
- › Steel toecap
- › Zipper
- › Fur lining
- › Rubber sole
- › Width XW
- › Size range: 39-49
- › UK size range: 6-14  
(including 6.5 and 9.5)



## ROBUST



- › Full grain leather/abrasion resistant rubber toecap
- › Steel midsole
- › Steel toecap
- › Pull-up straps
- › Fur lining
- › Rubber sole
- › Width XW
- › Size range: 39-49
- › UK size range: 6-14  
(including 6.5 and 9.5)





**COLOSSUS**

- › Full grain leather/abrasion resistant rubber toecap
- › Steel midsole
- › Steel toecap
- › Pull-up straps
- › Bata Cool Comfort®-/OutDry® waterproof-lining
- › Rubber sole
- › Width XW
- › Size range: 39-49
- › UK size range: 6-14  
(including 6.5 and 9.5)

**DEFENDER**

- › Full grain leather
- › Steel midsole
- › Steel toecap
- › Pull-up straps
- › Bata Cool Comfort®-/OutDry® waterproof lining
- › Rubber sole
- › Width XW
- › Size range: 39-49
- › UK size range: 6-14  
(including 6.5 and 9.5)
- › EN20349:2010 (Welding)



# PVC GUMBOOTS

Strong, safe and durable.

Workmaster II are S5 certified safety boots, including steel toecaps and steel midsoles. They also feature reinforcement at the heel, ankle and shin. Our gumboots are made of PVC that is formulated to meet the correct application across a wide range of industries. That makes the Workmaster II gumboots the best choice when you're looking for high performance, premium quality and lasting durability.

**WORKMASTER II - BLACK**

- › PVC black
- › Steel midsole
- › Steel toecap
- › Polyester lining
- › PVC sole
- › Width W
- › Size range: 38-47
- › UK size range: 5-12  
(including 6.5 and 9.5)









**Bata Industrials**

IMPROVING WORKING LIVES



# SOCKS RANGE

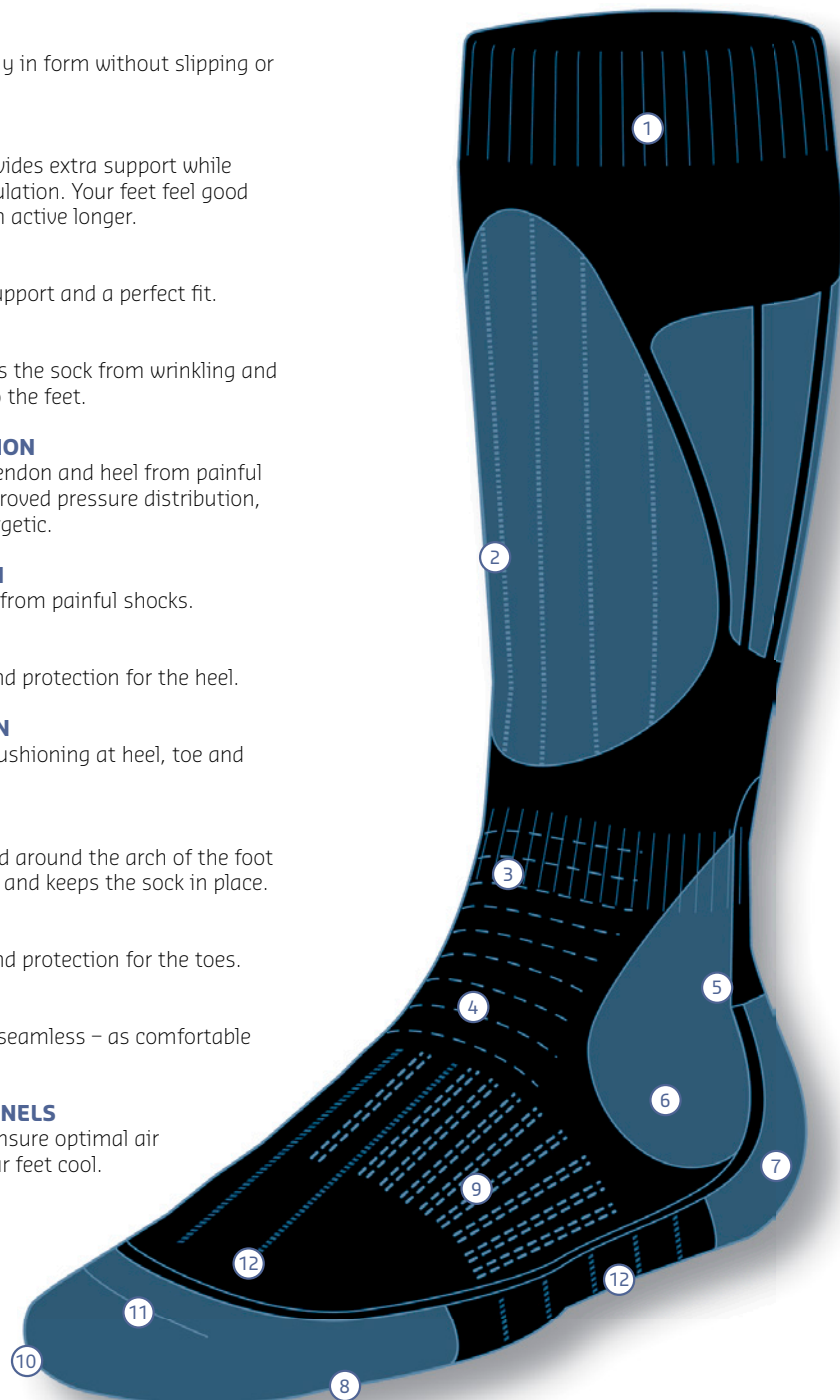
PERFECT FIT,  
PERFECT COMFORT



# SOCK TECHNOLOGY

Our shoes and socks work together to make your feet as happy as they can be! That's why we put as much innovative technology into our socks as we do into our shoes. The choices of high-tech fabrics and construction offer new levels of safety and comfort.

- 1 **COMFORT BOARD**  
Keeps the sock perfectly in form without slipping or constricting.
- 2 **LEG SUPPORT**  
Thick elastic shaft provides extra support while stimulating blood circulation. Your feet feel good allowing you to remain active longer.
- 3 **ANKLE SUPPORT**  
Provides extra ankle support and a perfect fit.
- 4 **FLEX FIT**  
Flexible instep prevents the sock from wrinkling and avoiding discomfort to the feet.
- 5 **ACHILLES PROTECTION**  
Protects the Achilles tendon and heel from painful shocks. Thanks to improved pressure distribution, you will feel more energetic.
- 6 **ANKLE PROTECTION**  
Welcoming protection from painful shocks.
- 7 **HEEL PROTECTION**  
Extra reinforcement and protection for the heel.
- 8 **SHOCK ABSORPTION**  
More comfort due to cushioning at heel, toe and sole areas.
- 9 **ARCH SUPPORT**  
An elastic section fitted around the arch of the foot provides extra support and keeps the sock in place.
- 10 **TOE PROTECTION**  
Extra reinforcement and protection for the toes.
- 11 **COMFORT SEAM**  
Perfectly smooth and seamless – as comfortable as can be!
- 12 **VENTILATION CHANNELS**  
Ventilation channels ensure optimal air circulation to keep your feet cool.





# ALL SEASONS SOCKS

No matter how cold or hot it is, the natural fibers in Bata's All Seasons socks always give your feet the highest level of comfort.

They are available in both merino wool and cotton, to match anyone's preferences. The natural merino wool is braided to produce very fine, non-itchy wool and therefore offers supreme comfort. Wool has a more uniform temperature to the skin, holds 30% moisture without feeling wet and is elastic and dirt resistant by nature. Cotton, however, is stronger, can hold more moisture and can be washed at 40°C. Special zones in every sock guarantee perfect fit and comfort. Your feet are safe and protected, supported in the right areas and perfectly comfortable. At all times.

**Sizes:** 35-38, 39-42, 43-46, 47-50

## ALL SEASONS MERINO WOOL



- › Left and right anatomically shaped
- › Leg and arch support
- › Flex Fit on instep and heel
- › Heel, toe, ankle and Achilles protection
- › Smooth board
- › Comfort seam
- › ESD

**Composition:** 45% merino wool, 26% polyamide, 17% Pro-Cool® (Polyester), 9% Amicor™ (acrylic), 2% Lycra® (elastane), 1% Bekinox® (metal fiber)

**Available in:** anthracite



## ALL SEASONS COTTON



- › Left and right anatomically shaped
- › Leg and arch support
- › Flex Fit on instep and heel
- › Heel, toe, ankle and Achilles protection
- › Smooth board
- › Comfort seam
- › ESD

**Composition:** 49% cotton, 22% polyamide, 17% Pro-Cool® (Polyester), 9% Amicor™ (acrylic), 2% Lycra® (elastane), 1% Bekinox® (metal fiber)

**Available in:** grey



## LOGO SOCKS

A professional style from head to toe? We can customize your socks by adding your company logo. Our logo socks are of the best quality, as we use the best yarns and produce them in our factory in the Netherlands. They are designed for a variety of working environments.

\*Minimum of 700 pairs per order. Ask our professionals for other ordering conditions.

**Sizes:** 35-38, 39-42, 43-46, 47-50

### EXECUTIVE

The perfect combination of an office and industry sock, made with thin yarns.

- > Lightweight sock with perfect fit, due to more Lycra® elastane
- > Moisture management and shock absorption through cotton
- > Terry knit in heel and toe
- > Flex Fit on instep and heel
- > Comfort seam
- > Heel protection
- > Ankle, Achilles and arch support

**Composition:** 47% cotton, 26% polyamide, 24% Polyester, 3% Lycra® (elastane)

**Available in:** grey. Logo on foot or leg



### INDUSTRY INDOOR



Comfortable sock which gives a cool feeling.

- > Medium weight sock with perfect fit, due to more Lycra® elastane
- > Moisture management and shock absorption through terry knit in heel and toe
- > Flex Fit on instep and heel
- > Comfort seam
- > Antibacterial fibers keep unpleasant smells at bay and keep feet feeling fit
- > Heel, ankle and Achilles protection
- > Arch support
- > ESD

**Composition:** 50% cotton, 20% polyamide, 18% Pro-Cool (Polyester), 9% Amicor™ (acrylic), 2% Lycra® (elastane), 1% Bekinox® (metal fiber)

**Available in:** black. Logo on foot or leg



### INDUSTRY OUTDOOR

Comfortable, very strong sock for outdoor use.

- > Medium weight sock with Thermolite® for warmer feet
- > Air flow at foot, moisture management and shock absorption through terry knit in foot
- > Flex Fit on instep
- > Comfort seam
- > Ankle and arch support

**Composition:** 77% Thermolite® Polyester, 22% polyamide, 1% Lycra® (elastane),

**Available in:** black. Logo on foot or leg





# COOL SOCKS

Keeping it cool at all times.

For warmer environments, Cool Socks from Bata provide feet with a pleasantly cooling sensation. All models from this collection contain Pro-Cool, which easily draws perspiration from the foot via the outer side of the sock to the interior lining of the shoe. This keeps the feet nicely cool and dry, with little chance of blister forming. The combination with other materials (fibers and yarns) and the addition of a variety of protective zones ensure unique functional and comfort enhancing characteristics. The blue line on the side of the sock shows that it is a cool sock.

## What's in a name

The name of the sock has been carefully drawn up and refers to precisely the kind of sock it is. The Cool designation is followed by a two-letter designation. The first letter stands for the thickness of the sock, while the second refers to its length.

Thickness/volume	length
L = Light	S = Short
M = Medium	M = Middle
H = High	L = Long

**Sizes:** 35-38, 39-42, 43-46, 47-50

## COOL LS 1



Feet remain pleasantly dry within this comfortable sock with its outstanding moisture-regulating properties.

- > Pleasant to wear due to the comfortable Flex Fit zone
- > Extra comfort and protection provided by the terry sole
- > Elastane in the leg, foot and ankle areas provides extra support and ensures a good fit
- > Antibacterial fibers keep unpleasant smells at bay and keep feet feeling fit
- > ESD

**Composition:** 44% cotton, 30% polyamide, 15% Pro-Cool (Polyester), 8% Amicor™ (acrylic), 2% Lycra® (elastane), 1% Bekinox® (metal fiber)

**Available in:** black



## COOL LS 2



A stylish, comfortable sock for people who prefer to wear a thin, moisture-regulating sock.

- > Optimal moisture-regulating properties ensure fresh, dry feet
- > Finely knitted, strong sock
- > Extra support prevents feet from becoming tired
- > Reinforced zones around the heel and toe ensure extra durability
- > ESD

**Composition:** 39% Pro-Cool (Polyester), 39% polyamide, 20% cotton, 1% Lycra® (elastane), 1% Bekinox® (metal fiber)

**Available in:** black



## COOL MS 1



This moisture-regulating sock is one of the best and strongest socks in the collection.

- > Pleasant to wear due to the comfortable Flex Fit zone
- > Extra comfort and protection provided by the terry sole
- > Elastane in the leg, foot and ankle areas provides extra support and ensures a good fit
- > ESD

**Composition:** 51% Pro-Cool (Polyester), 27% cotton, 20% polyamide, 1% Lycra® (elastane), 1% Bekinox® (metal fiber)

**Available in:** black



## COOL MS 2



The very latest technologies have been incorporated into this strong, moisture-regulating sock.

- > Thanks to optimal ventilation, feet remain cool and dry
- > Extra protection and comfort due to the terry sole
- > Antibacterial fibers keep unpleasant smells at bay and keep feet feeling fit
- > Reinforced zones around the heel and toe for extra durability
- > ESD

**Composition:** 35% cotton, 25% Pro-Cool (Polyester), 24% polyamide, 14% Amicor™ (acrylic), 1% Lycra® (elastane), 1% Bekinox® (metal fiber)

**Available in:** anthracite, black





### COOL MS 3



A strong, sporty sock with very good moisture-regulating properties. Pro-Cool draws perspiration from the foot via the outer side of the sock to the interior lining of the shoe.

- > Extreme moisture-regulating properties for pleasantly dry feet
- > Unpleasant odors stand no chance due to the use of silver fiber
- > Towelling zones around the ankle, Achilles tendon and sole ensure extra comfort and protection
- > Optimal wearing comfort thanks to the anatomically shaped foot sole in the left and right sock
- > Reinforced zones around the heel and toe for extra durability
- > ESD

**Composition:** 78% Pro-Cool (Polyester), 19% polyamide, 2% Silver, 1% Lycra® (elastane)

**Available in:** blue denim with grey



# THERMO SOCKS

In cold and damp conditions Thermo socks from Bata Industrials keep your feet warm and dry.

Most of our Thermo Socks incorporate a high percentage of virgin wool.

In combination with other materials and the addition of a variety of protective zones, this ensures unique functional and comfort enhancing characteristics.

The red stripe on the side of the sock shows that it is a thermo sock.

### THERMO HM 1

A thick, calf-length sock made from Zirpro virgin wool with meta-aramid fiber. Flame-resistant and especially designed for fire crews and welders. Safe and yet comfortable too. Complies with safety standards EN 531.

- > Good protection in extreme heat due to flame-resistant, heat-resistant virgin wool
- > Shrink-proof and therefore easily washable in the washing machine
- > Extra comfort during wear due to the terry sole

**Composition:** 59% Zirpro virgin wool, 36% meta-aramide, 4% polyamide, 1% Lycra® (elastane)

**Available in:** black



## THERMO HM 2

A thick, calf-length sock made from virgin wool to keep feet pleasantly warm and dry. Ideal for in boots and high cut shoes. A superb fit, with a specially long band to prevent sagging.

- › The natural action of wool ensures agreeably dry feet
- › Comfortable, strong terry material around the heel and toe
- › Extra reinforcement around the heel and toe extends the life span
- › Good support for the leg and front of the foot reduces fatigue

**Composition:** 40% polyamide, 37% shrink-resistant virgin wool, 22% acrylic, 1% Lycra (elastane)

**Available in:** black



## THERMO MS 1

This comfortable sock is 100% synthetic and the strongest sock in the collection. It is superbly warm and has excellent moisture regulation, ideal for people who have to work in cold conditions like construction workers and road menders.

- › Super light, insulating sock that keeps feet agreeably warm
- › The Air Flow zone ensures optimal air circulation to keep feet dry
- › Extra protection and comfort during wear through the use of a terry sole
- › Special zones offer protection to the heel and toe

**Composition:** 75% Thermolite (Polyester), 24% polyamide, 1% Lycra® (elastane)

**Available in:** black



## THERMO MS 3



A warm, woolen ankle sock with superb moisture regulation. Thanks to the combination of virgin wool and Pro-Cool, feet remain warm and dry in all conditions.

- › Antibacterial fibers keep unpleasant odors at bay
- › The Air Flow zone ensures optimal air circulation
- › Terry zones around the ankle, Achilles tendon and sole ensure extra comfort and protection
- › Toe and heel areas are reinforced and therefore durable
- › ESD

**Composition:** 34% shrink-resistant virgin wool, 29% polyamide, 23% Pro-Cool (Polyester), 12% Amicor™ (acrylic), 1% Lycra® (elastane), 1% Bekinox® (metal fiber)

**Available in:** black





## THERMO ML



An agreeably long, warm woolen sock, ideal for people wearing boots. Through the combination of virgin wool and Pro-Cool, feet remain warm and dry in all conditions. Has many supportive and protective zones, plus an extra-long band to prevent sagging.

- > Optimal air circulation for pleasantly fresh, dry feet
- > Antibacterial fibers keep unpleasant smells at bay
- > Special zones provide protection for the heel and toe as well as comfort for the leg
- > Extra comfort during wear thanks to anatomically shaped foot sole in the left and right sock
- > ESD

**Composition:** 47% shrink-resistant virgin wool, 27% polyamide, 16% Pro-Cool (Polyester), 8% Amicor™ (acrylic), 1% Lycra® (elastane), 1% Bekinox® (metal fiber)

**Available in:** anthracite



# PERSONALIZE YOUR SOCKS



DISCOVER THE POSSIBILITIES  
ON OUR WEBSITE:

[WWW.BATAINDUSTRIALS.COM](http://WWW.BATAINDUSTRIALS.COM)

**SAFETY  
MEETS  
DESIGN**



# INLAY SOLES

At Bata Industrials, shoes, socks and inlay soles are all tied together. They not only amplify each other's comfort-enhancing qualities, they also reduce fatigue and lead to better energy retention for the wearer. This results in more safety and therefore less accidents in the workplace.

Premium Fit and Superior Fit are two high-quality inlay soles that ensure an even better fit. They are provided with smart, supporting zones for optimum wearing comfort and stability. The sizes fit perfectly with most of our ranges.

**Sizes:** 35-37 / 38-40 / 41-43 / 44-46 / 47-49

**Widths:** suitable for the widths W and XW

## PREMIUM FIT



- › Poliyou® and mesh top-layer provide a fresh and dry feeling. Mesh reduces friction so foot temperature stays comfortable
- › Arch support zone provides added support to the arch of the foot. Pressure is distributed by memory foam and feet feel less tired and burning
- › Cushioning absorbs shocks and offers added comfort in the heel and ball of the foot. Feet feel less tired as a result
- › ESD



## SUPERIOR FIT



- › The shank offers support to assist the rotation of the foot and in that way feet are fitter at the end of the day
- › Poliyou® and mesh top-layer provide a fresh and dry feeling. Mesh reduces friction so foot temperature stays comfortable
- › Arch support zone provides added support to the arch of the foot. Pressure is distributed by memory foam and feet feel less tired and burning
- › Cushioning absorbs shocks and offers added comfort in the heel and ball of the foot. Feet feel less tired as a result
- › ESD







## Personally customized safety shoes with Bata adapt<sup>®</sup>

The step-by-step plan offers a simple and fast solution for perfectly fitted and certified safe safety shoes for some countries.

For more information go to [www.bataindustrials.com/bata-adapt](http://www.bataindustrials.com/bata-adapt) or contact our Customer Service via telephone number 0031 (0) 499 - 362 912.

# Bata adapt<sup>®</sup>

[www.bataindustrials.com/bata-adapt](http://www.bataindustrials.com/bata-adapt)







**Bata Industrials**

IMPROVING WORKING LIVES

# IMPROVING WORKING LIVES

At Bata Industrials, we believe that people work at their best when they are better equipped and protected. We improve working lives by delivering the highest quality safety footwear, designed to meet the demands of hard working people wherever they are in the world. Through our continuous innovation processes, we develop new features and designs which contribute to safety, comfort, vitality, durability and quality. At Bata Industrials we believe that with our footwear you will feel better at work.

